



CAN-AM



Merry  
Christmas

AND HAPPY NEW YEAR





# TABLE OF CONTENTS



## DECEMBER OFFERS

December Offer	02
News of the Month	03
News of the Month	04

## PROMO FOR LOYAL CUSTOMER

Referral Program	05
The New C-Traq	06

## MEET OUR TEAM

Ramon Fernandez	07
New Customers	08
Watchdog on Steroids	09

## MEET OUR NEW CLIENT

KING GEORGE	10
-------------	----

## OUR CEO

A letter from the owner	11
----------------------------	----

**FANTASTIC TAKE AWAY FOR  
EVERYONE WHO IS NOT SATISFIED  
WITH THEIR EXISTING GPS**

READY FOR **CAN-AM'S**

**THE BIG  
SWITCH!**



**FREE HARDWARE {HARNESS + GO9 DEVICE}  
THE FIRST THREE MONTHS FREE FOR GEOTAB DATA**



\*THIS OFFER ONLY APPLIES TO TAKE-AWAY'S  
\*THIS OFFER IS BOUND TO A 2-YEAR CONTRACT  
\*THIS OFFER DOES NOT APPLY TO CAMERA SOLUTIONS



**CANAMTELEMATICS**



**CAN-AM-TELEMATICS**



**1-866-976-4177**



**www.canamtelematics.com**



**CAN-AM** Authorized Reseller  
**GEOTAB**  
Provider in the World by ABI Research

# OPTIMIZING FLEET SAFETY WITH AI: AN INNOVATIVE APPROACH

## Compliance Monitoring: Real-Time Oversight

In the dynamic world of fleet management, safety is a constant priority. Integrating artificial intelligence (AI) into fleet safety programs is revolutionizing how companies manage and mitigate risks. Geotab, a leader in telematics solutions, highlights how AI can transform fleet safety, enhancing compliance, driver performance, and incident response.

## Continuous Coaching: Improving Driver Performance

Staying up-to-date with regulations is a daily task. AI facilitates the monitoring of risk scores, the use of dashboard cameras, and the generation of reports, allowing fleet managers to make quick and well-informed decisions. Real-time alerts help simplify this process, ensuring fleets operate within established safety parameters.

## Incident Analysis: Quick and Effective Response

Effective coaching is continuous and data-driven. AI tools provide fleet managers with a clear view of their drivers' performance, enabling them to plan specific coaching sessions that lead to real improvements. This proactive approach not only enhances safety but also fosters a culture of responsibility and excellence among drivers.

## Enhancing Predictive Maintenance

One of the most significant advantages of AI in fleet management is its ability to predict maintenance needs before they become critical issues. By analyzing data from various sensors and historical maintenance records, AI can forecast potential failures and schedule timely maintenance. This not only reduces downtime but also extends the lifespan of fleet vehicles. Predictive maintenance ensures that vehicles are always in optimal condition, which directly contributes to overall fleet safety and efficiency. Companies that have adopted AI-driven maintenance strategies report fewer breakdowns and lower maintenance costs, highlighting the transformative impact of this technology.



## Why AI is Crucial for Fleet Safety

Incidents are inevitable, but quick and effective response is crucial. AI tools offer a clear breakdown of events, providing fleet managers with the insights needed to adjust protocols and prevent similar incidents from recurring. This detailed analysis allows for more efficient management and a significant reduction in risks.



# MAXIMIZE FUEL EFFICIENCY WITH TOP FUEL MANAGEMENT TOOLS

## What is a Fuel Management System?

In the competitive world of fleet management, optimizing fuel consumption is essential for reducing costs and improving operational efficiency. Geotab, a leader in telematics solutions, presents a list of the best fuel management system tools that can transform how fleets manage their fuel consumption. These tools provide comprehensive data and insights, enabling fleet managers to make informed decisions that enhance fuel efficiency and reduce overall expenses.

## Top Fuel Management Tools

Among the top tools highlighted by Geotab are Fuel Tracker, Car IQ Pay, Coast, and FuelBI. Each tool offers unique features tailored to different aspects of fuel management. For instance, Fuel Tracker integrates seamlessly with Geotab Drive, providing a free and easy-to-use solution for tracking fuel costs. Car IQ Pay offers a mobile payment platform that eliminates the need for traditional fuel cards. Coast provides detailed expense monitoring, and FuelBI delivers advanced analytics for comprehensive fuel reporting.

### How fuel management systems work

#### STEP 1

##### Implement a fuel management system

- Install hardware (fuel sensors, GPS trackers, telematics device) in your fleet vehicles
- Pair your hardware with compatible software that tracks driver behavior, fuel consumption and real-time vehicle location



#### STEP 2

##### Review web-based application or mobile app

- Create fuel efficiency reports
- Track fuel purchases
- Receive alerts of fraudulent fuel transactions



## Benefits of Implementing Fuel Management Systems

Implementing the right fuel management system can offer numerous benefits, including significant cost reductions, improved driver behavior, and enhanced operational efficiency. These systems help prevent fuel fraud, provide detailed reporting, and enable proactive maintenance, ensuring that vehicles operate at peak efficiency. By choosing the appropriate tools, fleet managers can not only save on fuel costs but also contribute to a more sustainable and environmentally friendly operation.



December OFFER

GEOTAB



# How Our Referral Program Works

## Maximize Your Savings with CAN-AM Referrals!

We recently had a great success story with BPC Corporation, one of our valued clients. BPC referred Viking Dirworks to us, and as a result, Viking Dirworks signed on with 6 vehicles. BPC already had 10 vehicles in our program, and thanks to the referral, they enjoyed of one free month for 6 of their vehicles!

It's that simple—refer a new client, and you could be saving big just like BPC. Don't miss out on this easy way to reduce costs while helping others experience the benefits of CAN-AM.

**Start referring and start saving today!**

Send your friends information to  
[sales@canamwireless.com](mailto:sales@canamwireless.com)  
1-866-976-4177







# C-TRAQ ASSET TRACKER

## PROACTIVE NOT REACTIVE!

CAN-AM Telematics offers personalized and proactive customer service that identifies and resolves issues before they get worse.



Hardware:  
\$95

Monthly  
Service from:  
\$12

## C-TRAQ 1

## BUILT TO LAST

C-TRAQ is built from durable materials so it can stay attached for a long time.

- IP67 rated to withstand dust, dirt, rain, sleet and snow
- Sealed in a rugged enclosure designed for the elements
- Operates from -22°F to 140°F

- **Find assets for years**

Track your assets for long stretches even years wherever they are.

- **Hidden**

C-TRAQ's design is simple and easy to hide.

- **Maintain Connection**

C-TRAQ keeps your asset connected regardless of location or reception.

### KEY FEATURES

- ✓ 24/7/365, U.S.-based technical support
- ✓ Intelligent motion-based tracking
- ✓ Compact design form
- ✓ Theft Recovery Mode
- ✓ GPS and GNSS
- ✓ Wi-Fi® fallback for location
- ✓ IP67 rated



Hardware:  
\$105

Monthly  
Service from:  
\$14

## C-TRAQ 2 WITH TAMPER DETECTION!

- Indoor/Outdoor asset management: GNSS, Wi-Fi AP MAC Address Scanning, and Cell Tower location.
- Deploy—once battery life: 10+ years with 2 x AA user-replaceable batteries.
- Cloud-based location solving: Provides substantial power savings.
- Magnetic switch: For activation and tamper detection.
- Slim, ultra-rugged housing: IP68 and IK07 rated.
- LTE-M/NB-IoT connectivity: Ensures reliable communication.



CAN-AM



866-976-4177

[sales@canamwireless.com](mailto:sales@canamwireless.com)

[canamtelematics.com](http://canamtelematics.com)

## OUR NEW CUSTOMERS



# WELCOME to the family!







# Watchdog on Steroids

Guys & Girls

I'm constantly asking the Sales Engineers and CX Team, "How can we enhance the platform with something that the guys will use, that's needed and easy?" In fact, I'm a bit of a pain in the butt, imagine that!

Well, they did it and shut me up for once. Allow me to introduce **Watchdog on Steroids.**

I'm sure everybody has the watchdog feature on their customized dashboard, so now in addition to this, in the event of a unit being disconnected for any reason, you will receive an automated email daily with the essential info: which unit, when, what's the location? Then you will receive an automated call from the Team until together we get this situation resolved.

I'm very proud of this free-of-charge enhancement and hope you enjoy it.

Next on my list is C-Traq, our brand-new (regular) battery-operated asset tracker, is getting more alerts and more crystal-clear auto reports!

**Thank you for being the best thing about CAN-AM.**

**See y'all soon.**

Regards, Steve.



# CAN-AM CASE STUDY 2024

# KING | GEORGE

Traffic Solutions

## Alvarado, TX

### BUSINESS

Founded in 2008, King George Traffic Solutions is a leader in traffic management and safety services. Their traffic solutions work by combining various strategies to alleviate congestion, reduce the environmental impact of transportation, and enhance the overall quality of life in urban and suburban areas. Operating from their headquarters in Fort Worth Texas, with satellite offices located in Houston, San Diego, Ventura, Memphis, Oklahoma City, Washington D.C., and Kansas City, they are well-positioned to serve their clients effectively.



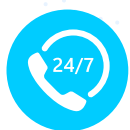
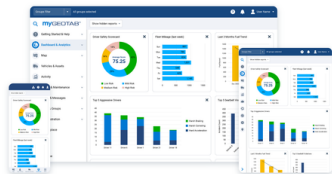
C-TRAQ



SurfSight



GEOTAB



24/7 Support



Maintenance



Emissions



Routing



AI



ELD Support



Auto reports /Alerts

*"We have tried several systems and after many trials Can-Am was found to be the best by far. Their customer service with 24/7 assistance, setting up customized reports, and installing every device and camera and has been second to none. Over the years we have tried Samsara and Verizon Connect and found both to be pale in comparison. I would recommend Can-Am to any business that has similar challenges to ourselves"*

**Chris Garcia - Director Operations**

### CHALLENGES

The challenges that King George were facing at the beginning of our relationship were, Driver Safety, Excessive Speeding, Excessive Idling, Collision Reconstruction, Rising Insurance Cost, Cellphone Distractions and maintaining all Assets cost effectively.

### SOLUTIONS

The solution provided by Can-Am Telematics not only included the installation of Geotab GO9s, SurfSight cameras and C-TRAQ asset trackers, but as well exceptional customer service providing 24/7 support including, customized automated reports, AI predictive maintenance, collision and stolen vehicle reconstruction, customized vehicle inspection templates, and dedicated customer experience team with weekly reviews.

### RESULTS

- Fuel cost reduced
- Zero unauthorized use
- Total visibility of all fleets and assets 24/7
- Collisions and accidents decreased
- Reduction in stolen assets
- Increased profitability
- Reduction in maintenance cost, due to predictive maintenance
- Increase longevity of assets
- Improved driver safety and risk management (speeding and cellphone distractions)
- Better insurance rate



1-866-976-4177



[www.canamwireless.com](http://www.canamwireless.com)



300 E New Hope Drive Ste 103,  
Cedar Park, TX, 78613





## A LETTER FROM THE OWNER



### “ Dear CAN-AM Telematics Family,

As we enter this season of gratitude, I want to take a moment to express my heartfelt thanks to each and every one of you. This year has been an incredible journey filled with challenges and achievements, and none of it would have been possible without your dedication and tireless efforts.

Thank you for your commitment to excellence and for your passion for our work. Each of you has played a crucial role in our success and in building a company we can all be proud of.

As we approach the end of the year, let's reflect on our victories and learn from our experiences. I am excited about what the future holds and confident that, together, we will continue to reach new heights.

I wish you and your loved ones a festive season filled with joy, peace, and happiness. Thank you for being part of the CAN-AM Telematics family! ”



**Johan Rahardjo**